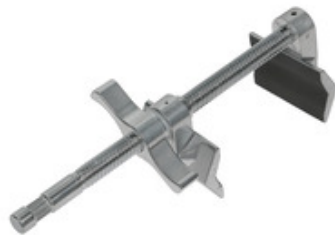


Vise Clamp with 16 mm Pin - Medium

Reference: GCX-VISECLSPIGM



- Max opening: 16 cm
- Aka: Super Viser / Cardellini / 9" Metthellini Clamp, MaxClamp
- Spigot 16 mm tail
- Rubber pads to protect surface & avoid slipping
- Anti-twist grooved threaded shaft
- Total length: 28 cm | 0.68 kg
- Payload: 50 kg
- As: KCP-607, KG603912, 420210, ME-106, C152EJ



Product description:

Also known as: Cardellini, Matthellini Clamp, Max Clamp or End Vice Jaw.

Adjustable C-Clamp with 28 cm total length.

The jaws are made of die casting aluminum making it sturdy and lightweight while the threaded shaft with 16mm spigot is made of steel for improved strength.

The jaws are rubber padded to protect the surface and avoid slipping.

Spigot pin 16 mm on the bottom end to attach lights or other compatible accessories.

Spigot nozzle with textured anti-rotation surface.

Grooved design on the threaded shaft to keep the orientation of both jaws in the same direction all the way.

Similar with other brands clamps: Kupo KCP-607, KG603912 Super Viser Clamp, 420210 Matthews Matthellini 6", C152EJ End Vise Jaw Clamp, Cardellini XXL, ME-106

- Total length: 28 cm
- Jaws opening: 16 cm
- Width of the jaws: 7.7 cm
- Payload: 50 kg
- Clamp weight: 680 g

Technical Specifications:

Grip & Mounting

Grip type	Clamp
Mounting	Stud 16mm (5/8")
Openings	0-160 mm
Max opening	160 mm
Maximum payload	50 kg
Overall size	28 cm
Color	Chrome
Material	Steel alloy
Weight	0.68 kg