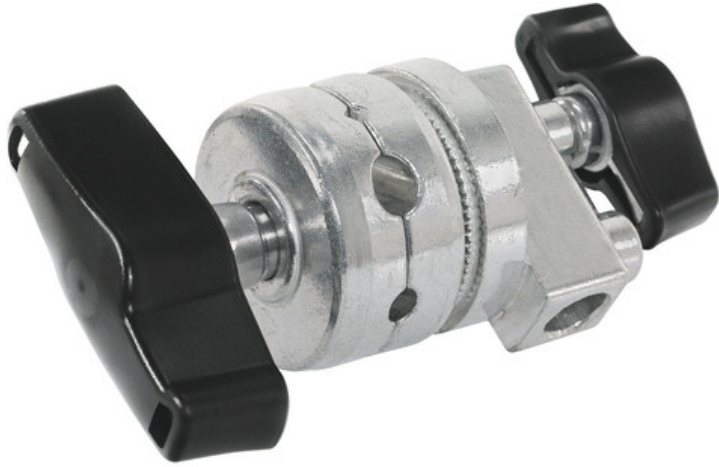


Grip Head

Reference: GGX-GRIPHEAD



- Jaws diameters: 19/16/13/8/6 mm
- Also known as Gobo Head
- Sturdy cast aluminum body
- Non-slip friction pad with tooth design
- Large sized locking handle for maximum torque
- Anti-slip handle cover
- Fit short and lock neck 16mm spigots



Product description:

A grip head holds various lighting accessories such as flags, scrims and cutters in a precise position, making it a fairly common piece of equipment on most sets.

Made entirely from die cast aluminum with natural silver finish and larger locking handle with anti-slip surface, this grip-head (gobo head) meets various requirements in any studio. The T-handle provides precise and easy control of the grip.

The toothed friction pad surface ensures a firmly grip and a precise position with non-slip effect.

The grip body is made from solid cast aluminum.

The larger T-handle with anti-slip surface for maximum torque when tighten.

Can be used with a c-stand or baby stand (accommodates both short and long neck spigots using the dual position of the screw-in locking system).

- Jaws diameters: 19/16/13/8/6 mm
- Dimensions: 17 x 9 cm
- Weight: 0.6 Kg

Product features:

Overall size: 17 x 9 cm

Weight: 0.6 kg

Mounting: Receiver 16mm (5/8")

Material: Aluminum

Color: Silver

Grip type: Gobo

Openings: 19/16/13/8/6 mm