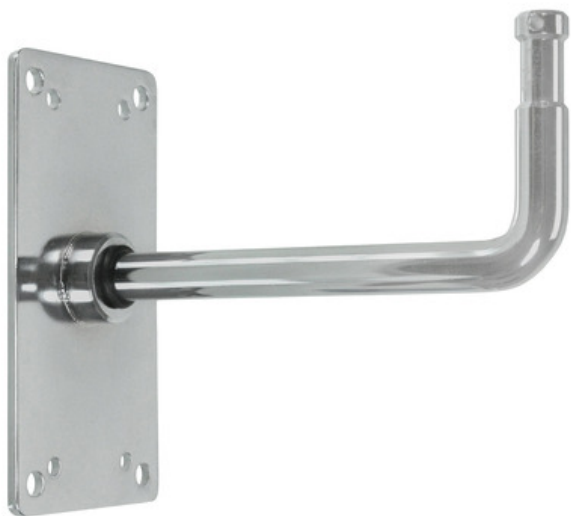


Wall Plate with Spigot 16mm Right Angle Pin

Reference: GPX-KB13



- For mounting on side walls
- Spigot 16 mm length: 65mm
- Arm length: 160 mm
- Pre-drilled M6 & M8 holes
- Made of chromed steel
- Size: 15 x 8 x 16 cm | 0.73 kg
- As: F809, KS-043, LF.8009.A, SR P-119P



Product description:

Baby pin wall plate with spigot 16 mm right angle for mounting lighting fixtures in places where light stands and clamps cannot be used.

Using this metal plate, any lamp head featuring a 16 mm mounting receiver can be installed on a side wall.

Similar with other brands wall mounts: F809 Wall Plate 90° Baby Pin, KS-043 / KGO08012 Right Angle Baby Wall Plate, 429590, LF.8009.A , SRP-119P.

- Mounting base size: 150 x 80 x 4 mm
- Baby pin length: 65 mm
- Arm length: 160 mm
- Pre-drilled holes M8 & M6
- Made of chromed steel
- Weight: 730 g

Technical Specifications:

Grip & Mounting

Grip type	Plate
Mounting	Stud 16mm (5/8")
Maximum payload	N/A
Overall size	15 x 8 cm
Color	Chrome
Material	Steel alloy
Weight	0.73 kg